



## NATIONAL TYPE EVALUATION PROGRAM

# Certificate of Conformance

for Weighing and Measuring Devices

**For:**

Point-Of-Sale System Software  
Model: UP Restaurant  
Software Version: 1.5.0.301 or higher

**Submitted By:**

United POS Solutions, Inc.  
255 Route 17 South  
Hackensack, NJ 07601  
Tel: 800-303-2567  
Fax: 201-562-1480  
Contact: Jonathan Lau  
Email: [pos@upsolution.com](mailto:pos@upsolution.com)  
Web site: [www.upsolution.com](http://www.upsolution.com)

**Standard Features and Options****Standard Features:**

- This POS system can be used with non-computing scales with single interval units in: pounds (lb) with 0.01 lb and 0.005 lb division size, or ounces (oz) with 0.1 oz division size or grams (g) with 0.002 kg or 2 g division size.
- Scales used with this system must have their own integrated or remote primary display.
- This POS system software was evaluated running in a United POS Solutions model UP-7000, but it may be installed in any system meeting the following minimum requirements:

**Minimum Hardware Specification for Running UP Restaurant Software:**

- CPU – Intel 1 GHz or Higher
- RAM – 512 MB or Higher (1 GB RAM Recommended)
- HDD – 2 GB or Higher Free Space
- Video Card – Supporting 1024 x 768 Pixel Screen Resolution
- Operating System – Windows XP or Higher (WEPOS)
- Display Type – 15" TFT LCD With 5 Wired Resistive Touch Screen, 1024 x 768 Resolution
- Integrated CDP: VFD Type, 20 Columns x 2 Lines (Customer Display, displaying net weights and monetary \$ amounts)

**Options:**

- Uninterruptible Power Supply (UPS)
- Card Reader, UPC Barcode Scanner

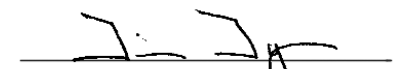
**Software Version:**

- 1.5.0.301 or higher

This device was evaluated under the National Type Evaluation Program and was found to comply with the applicable technical requirements of "NIST Handbook 44: Specifications, Tolerances and Other Technical Requirements for Weighing and Measuring Devices." Evaluation results and device characteristics necessary for inspection and use in commerce are on the following pages.



Kurt Floren  
Chairman, NCWM, Inc.



Jim Tyson  
Chairman, National Type Evaluation Program Committee  
Issued: February 7, 2012

1135 M Street, Suite 110 / Lincoln, Nebraska 68508

The National Conference on Weights and Measures (NCWM) does not approve, recommend or endorse any proprietary product or material, either as a single item or as a class or group. Results shall not be used in advertising or sales promotion to indicate explicit or implicit endorsement of the product or material by the NCWM.

**United POS Solution Inc.**

Point-Of-Sale System Software / UP Restaurant

**Application:** UP Restaurant software is designed to be installed on a Microsoft Windows based Operating System. When the system is installed with a scale it can be used as a Point of Sale system in grocery stores, delicatessens, yogurt shops and commercial hospitality establishments. In a commercial installation the system must be used with a NTEP certified and compatible single interval non-computing scale with a display in pounds with a 0.01 lb or 0.005 lb division size or a scale displaying in ounces with a 0.1 oz division size or a scale displaying in 0.002 kg or 2 g. The scale used with the system must have its own integral or remote primary weight display, which is visible to the customer. The system must be set up with only one type of weights unit and all weight displays, tare weight operations and receipt formats must match that of the scale it is interfaced to.

**Identification:** The identification for the software system is displayed on the top of the operating screen's display. This information includes; the manufacturer, the model designation, the CC number and the software version number.

**Operation:** This POS system captures weights from a certified and comparable non computing single range scale, applies a tare weight (if applicable) and calculates a total selling price based on the items unit price. The system is approved for use with scales in pound units with division sizes of 0.01 lb, 0.005 lb, in gram units with division sizes of 0.002 kg, 2 g, and scales in ounce units with a division size of 0.1 oz. The system runs on a windows based system and screen saver mode must be disabled.

To display the weight menu, the user must first click on the "Quick Serve" mode, and choose any item that is sold by weight. Once a menu item is selected, the possible tare options for that item are displayed. The weight for the item is captured from the scale. Then the net weight for the item is displayed along with the gross and tare weights. The total price for the item also displayed.

Note: WEPOS (Windows Embedded for Point of Sale) is a POS ready system is a specialized edition of Windows XP.

**Test Conditions:** This certificate supersedes NTEP certificate of conformance 10-037 and is issued to add a device that weighs in grams. The emphasis of this evaluation was on device design, operation, performance, receipt format and its operation when interfaced to a scale in grams. A CAS model SW10 (NTEP certificate of conformance number 99-002) (5000 x 2 gram). Previous test conditions are listed below for reference.

**Certificate of Conformance Number 10-037:** The emphasis of this evaluation was on device design, operation, performance, receipt format and its operation when interfaced to three scales each with a different division size. Three sets of performance tests were conducted. The system was evaluated using an UP solutions model UP-7000 which consists of a 15 inch color LCD touch screen monitor, an integral printer and a 2 line VFD customer's display. The POS system was evaluated while interfaced to three (3) different model scales, displaying in pounds with division sizes of 0.01 lb and 0.005 lb, and ounces with a 0.1 oz division. The scales used were Avery Berkel scales model 6702 for 15 x 0.005 lb, model 6710 for 30 x 0.01 lb and model 6712 with cap of 160 x 0.1 oz. Each group of tests included various sets of simulated transaction for the purchases of items sold by weight (with and with out tare values) and items sold by count. Screen displays and receipt formats were evaluated.

**Evaluated By:** B.Fishman (NY) 10-037; E. A. Payne, Jr. (MD) 10-037A1

**Type Evaluation Criteria Used:** NIST, Handbook 44: Specifications, Tolerances and Other Technical Requirements for Weighing and Measuring Devices, 2012 NCWM, Publication 14: Weighing Devices, 2011

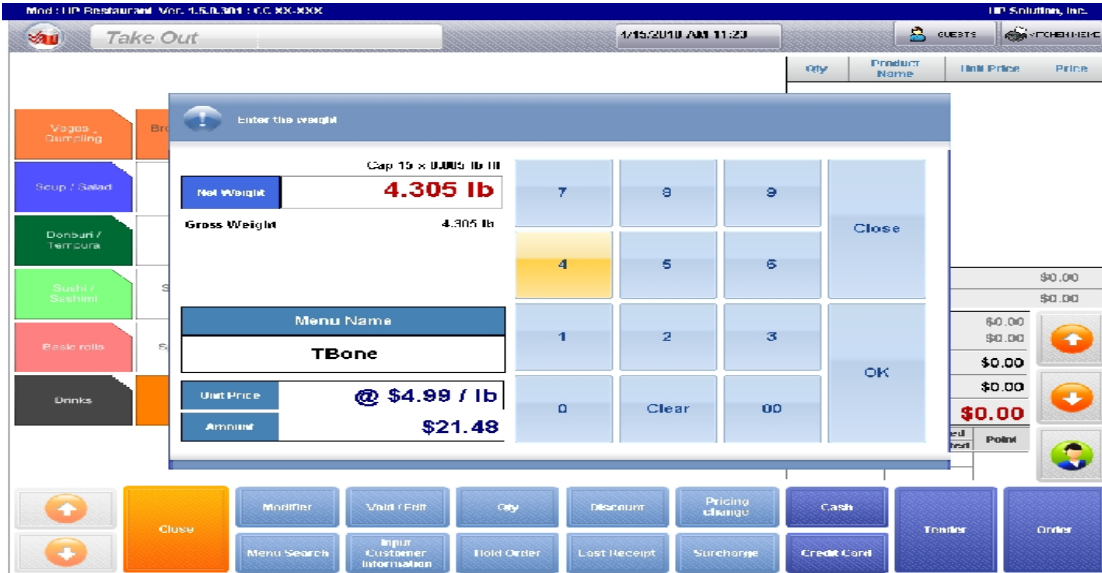
**Conclusion:** The results of the evaluation and information provided by the manufacturer indicate the device complies with applicable requirements.

**Information Reviewed By:** J. Truex (NCWM) 10-037, 10-037A1



**United POS Solution Inc.**  
Point-Of-Sale System Software / UP Restaurant

**Examples of the Device:**



Screen Display



UP Solution Inc.  
255 Rt. 17 South Hackensack  
NJ 07601  
800-260-3388

**Sale**

Receipt # 20100416-10002 Station ID : 10  
Take Out UP Solution

Tbone		\$26.74
5.76 lb	@ \$4.99 / lb	
Avocado Salad		\$0.95
Clam Soup		\$12.00
3 pc	@ \$4.00 / pc	
Yogurt		\$1.13
2.30 lb	@ \$0.49 / lb	
Sub Total :		\$45.82
TAX :		\$0.11
AMOUNT DUE :		\$45.93
CASH		\$45.93
PAID AMOUNT:		\$45.93

4/16/2010 1:59:50 PM  
Thank you  
Customer Copy

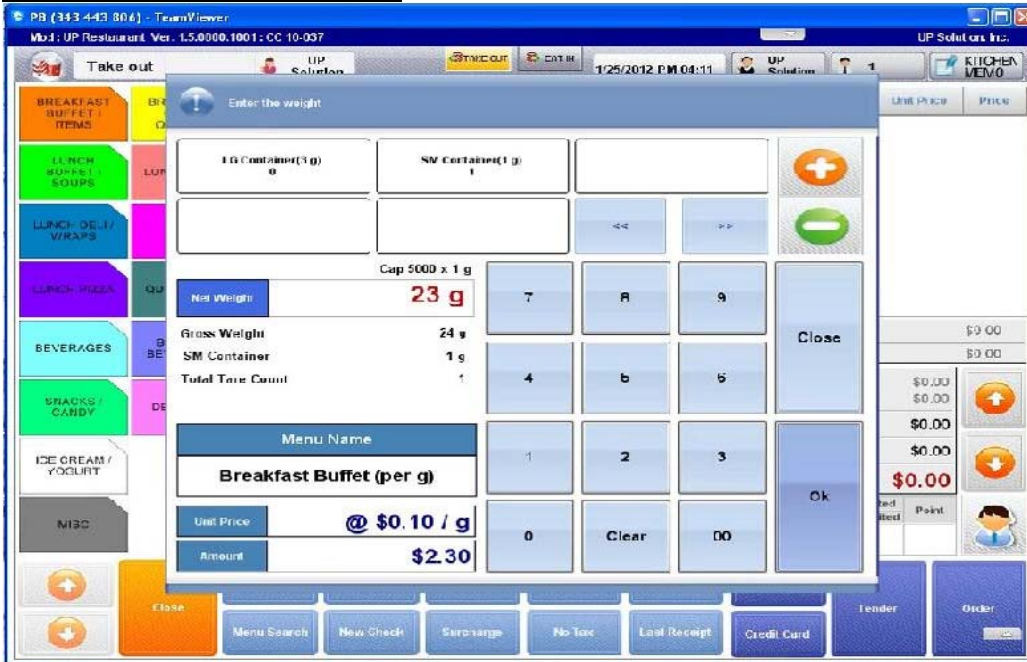
Receipt Format



**United POS Solution Inc.**

Point-Of-Sale System Software / UP Restaurant

**Examples of the Device Continued:**



UP Solution, Inc.  
255 Route 17 South  
Hackensack NJ 07601  
800-303-2557  
www.upsolution.com

**Sale**

Receipt # 20120125-10003 Station ID : 10  
Take Out UP Solution

Breakfast Buffet (per g)	\$2.30
NET : 23g @ \$0.10 / g	
Grilled Cheese Sandwich	\$3.04
20oz Water	\$1.57
Cookies	\$3.12
3 pc @ \$1.04 / pc	
-----	
Sub Total :	\$10.03
Sales Tax :	\$0.70
-----	
Amount Due :	\$10.73
-----	
CASH	\$10.73
-----	
Paid Amount :	\$20.00
Change:	\$9.27
-----	

1/25/2012 4:47:22 PM  
Thank you  
Customer Copy

